

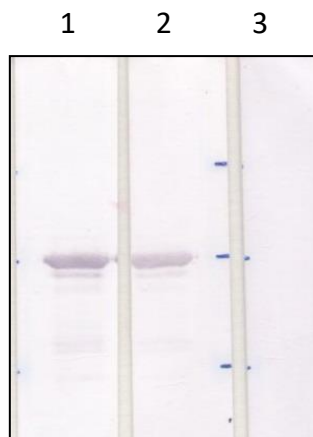


Product no **YH-80009**

Anti-Myc tag Mouse Monoclonal Antibody

Product information

Target description	Epitope tags are short peptide sequences that are easily recognized by tag-specific antibodies. Due to their small size, epitope tags do not affect the tagged protein's biochemical properties. Most often sequences encoding the epitope tag are included with target DNA at the time of cloning to produce fusion proteins containing the epitope tag sequence. The sequence of Myc tag is "EQKLISEEDL".
Application	Western Blot analysis (WB): 3,000 ~ 9,000 dilution ELISA: 2,000 ~ 20,000 dilution IP: 500 ~ 1,000 dilution IHC: 500 ~1,000 dilution
Form	Protein A affinity purified antibodies (containing 50% glycerol)
Storage	Aliquot and store at -20°C for long term storage. The product is stable for one year from the date of shipment.
Package	100ug/per tube Con. 1mg/mL



Lane 1: Myc-X, 3,000 x dilutions Ab

Lane 2: Myc-X, 9,000 x dilutions Ab

Lane 3: Untagged X, 9,000 x dilution Ab

