

4<sup>th</sup> Edition

專業代理

# ELISA Kits

Focusing on Emerging Research Fields:

## Metabolic Syndrome Biomarkers

Obesity/Type 2 Diabetes Markers  
Insulin Resistance Markers  
Cardiovascular Markers

## Inflammatory Diseases Biomarkers

Rheumatoid Arthritis  
Neuroinflammation Markers

## Cancer & Autoimmune Diseases Biomarkers

## SARS-CoV-2/COVID-19 Research Assays



## Biomarkers

ACE2	2
ACBP	2
Adiponectin	2
ANGPTL3 / ANGPTL6	2
APRIL / BAFF	3
Asprosin	4
B7-H3 [CD276]	4
Caspase-1	4
CD40L	4
DLK1	4
Erythroferrone [ERFE]	5
FGL1	5
FNDC4 <b>NEW</b>	5
Gasdermin D	5
Gasdermin E	5
GPX1 / GPX3	6
ICOSL	6
IL-1 $\alpha$ / IL-1 $\beta$	6
IL-36 $\alpha$ / IL-36 $\beta$ / IL-36 $\gamma$	6/7
IL-36Ra	7
IL-37	7
IL-38	7
Irisin	7
Nampt/Visfatin	8
PD-1 / PD-L1	8
Periostin	8
Progranulin <b>NEW</b> mAb/mAb	9
RBP4	9
RELM- $\beta$	11
Resistin	11
SARS-CoV-2/COVID-19	10
Sirtuin 1	11
Vaspin	11
Zinc- $\alpha$ -2-glycoprotein	11
Oxidative Stress Marker Assays	12
Trace Element Assays	12
Latest Additions	12

## ACE2 *see also on Page 10*

*Hypertension, CVD, CKD, Atherosclerosis, COVID-19, Airway Inflammation*

### **NEW** ACE2 (human) ELISA Kit

AG-45B-0023

Available Size: 96 wells

Species reactivity: Human  
Sensitivity: 40 pg/ml

Range: 0.0625 to 4 ng/ml  
Sample type: Serum, Plasma, Urine, Cell Culture Supernatant

## Acyl-CoA-binding Protein [ACBP]

*Metabolic Syndrome, Obesity, CVD, Myocardial Infarction/Ischemia, Cancer (NSCLC)*

### **NEW** Acyl-CoA-binding Protein (human) ELISA Kit

AG-45B-0019

Available Size: 96 wells

Species reactivity: Human  
Sensitivity: 30 pg/ml

Range: 0.03125 to 2 ng/ml  
Sample type: Serum, Plasma, Cell Culture Supernatant

LIT: Acyl-CoA-binding protein (ACBP): the elusive 'hunger factor' linking autophagy to food intake: J.M. Bravo-San Pedro, et al.; Cell Stress 3, 312 (2019)

## Adiponectin

*Metabolic Syndrome, Obesity, Insulin Resistance, Type 2 Diabetes (T2D), CVD, NAFLD, Obesity-related Inflammation, Various Cancers*

### Adiponectin (human) ELISA Kit **THE STANDARD**

AG-45A-0001Y

Available Sizes: 96 wells / Twin Plex

Species reactivity: Human  
Sensitivity: 100 pg/ml

Range: 0.5 to 32 ng/ml  
Sample type: Serum, Plasma, Urine, Cell Culture Supernatant

### Adiponectin (mouse) ELISA Kit

AG-45A-0004Y

Available Sizes: 96 wells / Twin Plex

Species reactivity: Mouse  
Sensitivity: 50 pg/ml

Range: 0.125 to 8 ng/ml  
Sample type: Serum, Plasma, Cell Culture Supernatant

### **NEW** Adiponectin (rat) ELISA Kit

AG-45B-0026

Available Size: 96 wells

Species reactivity: Rat, Mouse, Human  
Sensitivity: 50 pg/ml

Range: 0.0625 to 4ng/ml  
Sample type: Serum, Plasma, Cell Culture Supernatant

## ANGPTL3

*Metabolic Syndrome, CVD, NAFLD, Insulin Resistance, Rheumatoid Arthritis, Atherosclerosis*

### ANGPTL3 (human) ELISA Kit

AG-45A-0014Y

Available Size: 96 wells

Species reactivity: Human  
Sensitivity: 75 pg/ml

Range: 0.156 to 10 ng/ml  
Sample type: Serum, Plasma, Cell Culture Supernatant

### ANGPTL3 (mouse/rat) Dual ELISA Kit

AG-45A-0015Y

Available Size: 96 wells

Species reactivity: Mouse / Rat  
Sensitivity: 15 pg/ml

Range: 0.016 to 1 ng/ml  
Sample type: Serum, Plasma, Cell Culture Supernatant

## ANGPTL6

*Metabolic Syndrome, Type 2 Diabetes (T2D), Obesity, Insulin Resistance, Preeclampsia*

### ANGPTL6 (human) ELISA Kit

AG-45A-0016Y

Available Size: 96 wells

Species reactivity: Human  
Sensitivity: 1.2 ng/ml

Range: 1.56 to 100 ng/ml  
Sample type: Serum, Plasma, Cell Culture Supernatant

GLOSSARY: CVD: Cardiovascular Disease; NAFLD: Non-Alcoholic Fatty Liver Disease; SLE: Systemic Lupus Erythematosus; RA: Rheumatoid Arthritis

## APRIL

**Autoimmune Diseases (Sjögren's Syndrome, SLE, IgA Nephropathy (IgAN), Rheumatoid Arthritis, Lymphoma (CNSL), Atherosclerosis**

### **NEW** APRIL (human) ELISA Kit

AG-45B-0012

Available Size: 96 wells

Species reactivity: Human  
Sensitivity: 7 pg/ml

Range: 7.8 to 500 pg/ml  
Sample type: Serum, Plasma, Cell Culture Supernatant

## BAFF

**Autoimmune Diseases (Sjögren's Syndrome, SLE, Pancreatitis & Hepatitis), Lymphomas, Inflammatory Diseases (Polymyositis, RA, Sarcoidosis)**

### BAFF, Soluble (human) ELISA Kit (hypersensitive)

AG-45B-0001

Available Size: 96 wells

Species reactivity: Human  
Sensitivity: 8 pg/ml

Range: 15.6 to 500 pg/ml  
Sample type: Serum, Plasma, Cell Culture Supernatant

### BAFF, Soluble (human) *Matched Pair Detection Set*

AG-46B-0001

Reagents to perform 5 x 96 wells

Species reactivity: Human  
Sensitivity: 16 pg/ml

Range: 16 to 1000 pg/ml  
Sample type: Serum, Plasma, Cell Culture Supernatant

## Best-in-Class APRIL & BAFF ELISA Kits

**AdipoGen**<sup>®</sup>  
LIFE SCIENCES

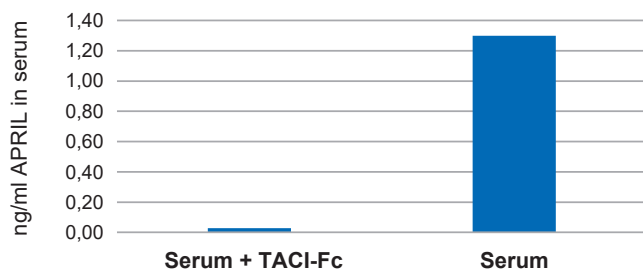
### **NEW** APRIL (human) ELISA Kit

AG-45B-0012

96 wells

**Sensitivity:** 1 pg/ml  
**Range:** 3.9 to 250 pg/ml  
**Sample:** Cell Culture Supernatant, Plasma, Serum

**Specificity:** Serum from a healthy patient is treated with TACI (human):Fc (human) (Prod. No. AG-40B-0079) coupled to NHS-Sepharose (or EDAR-Fc beads as control). APRIL levels are measured using the APRIL (human) ELISA Kit (Prod. No. AG-45B-0012).



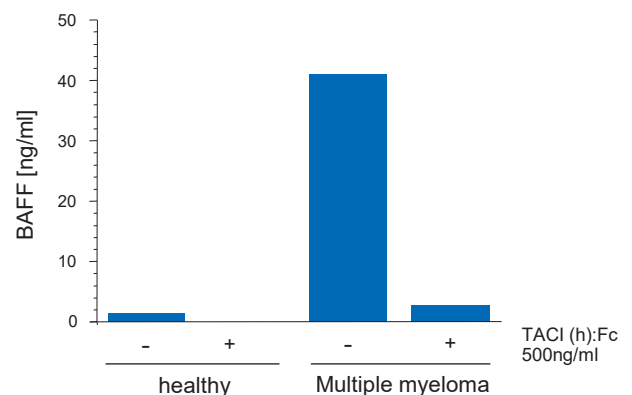
### BAFF, Soluble (human) ELISA Kit (hypersensitive)

AG-45B-0001

96 wells

**Sensitivity:** 8 pg/ml  
**Range:** 15.6 to 500 pg/ml  
**Sample:** Cell Culture Supernatant, Plasma, Serum

**Specificity:** Serum from a healthy patient or patient with multiple sclerosis is left untreated or treated with 0.5 µg/ml of a BAFF receptor, TACI (human):Fc (human) (AG-40B-0079). BAFF levels are measured using the BAFF, Soluble (human) ELISA Kit (hypersensitive) (Prod. No. AG-45B-0001).



# Asprosin

*Metabolic Syndrome, Obesity, Type 2 Diabetes (T2D), CVD, PCOS*

## **NEW** Asprosin (human) ELISA Kit

AG-45B-0010

Available Size: 96 wells

Species reactivity: Human  
Sensitivity: 230 pg/ml

Range: 0.3125 to 20 ng/ml  
Sample type: Serum, Plasma, Cell Culture Supernatant

## Asprosin (human) *Matched Pair Detection Set*

AG-46B-0011

Reagents to perform 5 x 96 wells

Species reactivity: Human  
Sensitivity: 150 pg/ml

Range: 0.156 to 10 ng/ml  
Sample type: Cell Culture Supernatant

# B7-H3 [CD276]

*Various Cancers (NSCLC, Prostate, Ovarian), Autoimmune Inflammatory Diseases (RA, Type 1 Diabetes, Asthma), CVD, Bacterial Infections (Meningitis, MPP)*

## **NEW** B7-H3 [CD276] (human) ELISA Kit

AG-45B-0025

Available Size: 96 wells

Species reactivity: Human  
Sensitivity: 0.3 ng/ml

Range: 0.3125 to 20 ng/ml  
Sample type: Serum, Plasma, Cell Culture Supernatant

# Caspase-1

*Assay for measuring Inflammasome Activation*

## Caspase-1 (mouse) ELISA Kit

AG-45B-0002

Available Size: 96 wells

Species reactivity: Mouse  
Sensitivity: 33 pg/ml

Range: 0.15 to 10 ng/ml  
Sample type: Serum, Plasma, Cell Culture Supernatant

## Caspase-1 (mouse) *Matched Pair Detection Set*

AG-46B-0003

Reagents to perform 5 x 96 wells

Species reactivity: Mouse  
Sensitivity: 50 pg/ml

Range: 0.15 to 10 ng/ml  
Sample type: Cell Culture Supernatant

# CD40L

*Autoimmune Diseases (SLE), Chronic Lymphocytic Leukemia (CLL), Unstable Angina*

## **NEW** CD40L (human) ELISA Kit

AG-45B-0018

Available Size: 96 wells

Species reactivity: Human  
Sensitivity: 20 pg/ml

Range: 0.03125 to 2 ng/ml  
Sample type: Serum, Plasma, Cell Culture Supernatant

# DLK1

*Metabolic Syndrome, Various Cancers, Preeclampsia, Steatosis*

## DLK1, Soluble (human) ELISA Kit

AG-45A-0032Y

Available Size: 96 wells

Species reactivity: Human  
Sensitivity: 336 pg/ml

Range: 0.47 to 30 ng/ml  
Sample type: Serum, Cell Culture Supernatant

## Erythroferrone [ERFE; Myonectin; CTRP15]

*Anemia, Iron Metabolism, CVD, Metabolic Diseases, Doping Analysis*

<b>NEW</b> Erythroferrone (human) ELISA Kit	AG-45B-0014	Available Size: 96 wells
Species reactivity: Human Sensitivity: 270 pg/ml	Range: 0.3125 to 20 ng/ml Sample type: Serum, Plasma, Cell Culture Supernatant	
<b>Erythroferrone (human) Matched Pair Detection Set</b>	AG-46B-0012	Reagents to perform 5 x 96 wells
Species reactivity: Human Sensitivity: 78 pg/ml	Range: 0.078 to 5 ng/ml Sample type: Serum, Plasma, Cell Culture Supernatant	

## Fibrinogen-like Protein 1 [FGL1]

*Various Cancers, Immunooncology, Rheumatoid Arthritis, Gestational Diabetes Mellitus (GDM)*

<b>NEW</b> FGL1 (human) ELISA Kit	AG-45B-0022	Available Size: 96 wells
Species reactivity: Human Sensitivity: 1.8 pg/ml	Range: 7.8 to 500 pg/ml Sample type: Serum, Plasma, Cell Culture Supernatant	
<b>NEW</b> FGL1 (human) Matched Pair Detection Set (mAb-based)	AG-46B-0014	Reagents to perform 5 x 96 wells
Species reactivity: Human Sensitivity: <5 pg/ml	Range: 7.8 to 500 pg/ml Sample type: Serum, Plasma, Cell Culture Supernatant	

## FNDC4

*Inflammatory Bowel Diseases, Inflammatory Metabolic Diseases, Various Cancers (Glioblastoma)*

<b>NEW</b> FNDC4 (human) ELISA Kit	AG-45B-0028	Available Size: 96 wells
Species reactivity: Human, Dog, Monkey, Mouse, Rat Sensitivity: 40 pg/ml	Range: 0.078 to 5 ng/ml Sample type: Serum, Plasma, Cell Culture Supernatant	

## Gasdermin D

*Pyroptosis, Sepsis*

<b>NEW</b> Gasdermin D (mouse) ELISA Kit	AG-45B-0011	Available Size: 96 wells
Species reactivity: Mouse Sensitivity: 14 pg/ml	Range: 15.6 to 1000 pg/ml Sample type: Cell Culture Supernatant, Cell Lysate	

## Gasdermin E

*Pyroptosis, Sepsis*

<b>NEW</b> Gasdermin E (human) ELISA Kit	AG-45B-0024	Available Size: 96 wells
Species reactivity: Human Sensitivity: 50 pg/ml	Range: 0.0625 to 4ng/ml Sample type: Serum, Plasma, Cell Culture Supernatant	

## GPX3 [Glutathione Peroxidase 3]

*Hypertension, Type 2 Diabetes (T2D), CVD, Atherosclerosis, Amyotrophic Lateral Sclerosis (ALS)*

### GPX3 (human) ELISA Kit

AG-45A-0020Y

Available Sizes: 96 wells / Twin Plex

Species reactivity: Human  
Sensitivity: 100 pg/ml

Range: 0.5 to 32 ng/ml  
Sample type: Serum, Plasma, Cell Culture Supernatant

## ICOSL [B7-H2; CD275]

*Autoimmune Diseases (GVHD), Various Cancers, Asthma*

### **NEW** ICOSL (B7-H2/CD275) (human) ELISA Kit

AG-45B-0017

Available Size: 96 wells

Species reactivity: Human  
Sensitivity: 55 pg/ml

Range: 0.0625 to 4 ng/ml  
Sample type: Serum, Plasma, Cell Culture Supernatant

## IL-1 $\alpha$

*Assay for measuring Inflammasome Activation and corresponding Inflammatory Diseases*

### IL-1 $\alpha$ (mouse) *Matched Pair Detection Set*

AG-46B-0004

Reagents to perform 5 x 96 wells

Species reactivity: Mouse  
Sensitivity: 10 pg/ml

Range: 15.6 to 2000 pg/ml  
Sample type: Cell Culture Supernatant

## IL-1 $\beta$

*Inflammasome-dependent Diseases, Familial Mediterranean Fever, Infections, Systemic Inflammatory Diseases, Selected Autoimmune Diseases, Various Cancers, Endometriosis, Allergic Rhinitis, Ventilator-associated Pneumonia, Neonatal Sepsis*

### **NEW** IL-1 $\beta$ (human) ELISA Kit

AG-45B-0021

Available Size: 96 wells

Species reactivity: Human  
Sensitivity: 1 pg/ml

Range: 1.5625 to 100 pg/ml  
Sample type: Serum, Plasma, Cell Culture Supernatant

## IL-36 $\alpha$

*Skin Inflammation, Psoriasis, IBD, Ulcerative Colitis, Crohn's Disease, Sjögren's Syndrome*

### **NEW** IL-36 $\alpha$ (human) ELISA Kit

AG-45B-0013

Available Size: 96 wells

Species reactivity: Human  
Sensitivity: 4 pg/ml

Range: 7.8 to 500 pg/ml  
Sample type: Cell Culture Supernatant, Cell Lysate

## IL-36 $\beta$

*Skin Inflammation, Psoriasis*

### IL-36 $\beta$ (human) *Matched Pair Detection Set*

AG-46B-0009

Reagents to perform 5 x 96 wells

Species reactivity: Human  
Sensitivity: 10 pg/ml

Range: 15.6 to 1000 pg/ml  
Sample type: Cell Culture Supernatant

## IL-36 $\gamma$

### Skin Inflammation, Psoriasis, Lung & Bowel Inflammation

#### IL-36 $\gamma$ (human) ELISA Kit

AG-45B-0008

Available Size: 96 wells

Species reactivity: Human  
Sensitivity: 3 pg/ml

Range: 3.9 to 250 pg/ml  
Sample type: Serum, Cell Culture Supernatant

#### IL-36 $\gamma$ (human) Matched Pair Detection Set

AG-46B-0010

Reagents to perform 5 x 96 wells

Species reactivity: Human  
Sensitivity: 1 pg/ml

Range: 3.9 to 250 pg/ml  
Sample type: Cell Culture Supernatant

## IL-36Ra

### Skin Inflammation

#### IL-36Ra (human) Matched Pair Detection Set

AG-46B-0006

Reagents to perform 5 x 96 wells

Species reactivity: Human  
Sensitivity: 0.5 ng/ml

Range: 0.78 to 50 ng/ml  
Sample type: Cell Culture Supernatant

## IL-37

### Inflammatory Diseases, Autoimmune Diseases (SLE), Various Cancers, Asthma, Atherosclerosis

#### IL-37 (human) ELISA Kit

AG-45A-0041Y

Available Sizes: 96 wells / Twin Plex

Species reactivity: Human  
Sensitivity: 10 pg/ml

Range: 0.016 to 1 ng/ml  
Sample type: Serum, Plasma

## IL-38

### Allergic Inflammation, Asthma, Autoimmune Diseases (SLE)

#### IL-38 (human) Matched Pair Detection Set

AG-46B-0007

Reagents to perform 5 x 96 wells

Species reactivity: Human  
Sensitivity: 20 pg/ml

Range: 0.031 to 2 ng/ml  
Sample type: Serum, Cell Culture Supernatant

## Irisin

### Energy Metabolism, Obesity, Type 2 Diabetes (T2D), Insulin Resistance, COPD

#### Irisin Competitive ELISA Kit

AG-45A-0046Y

Available Sizes: 96 wells / Twin Plex

Species reactivity: Human / Monkey / Mouse / Rat  
Sensitivity: 1 ng/ml

Range: 0.001 to 5  $\mu$ g/ml  
Sample type: Serum, Plasma, Cell Culture Supernatant

**LIT:** High irisin levels are associated with better glycemic control and bone health in children with Type 1 diabetes: M.F. Faienza, et al.; *Diab. Res. Clin. Pract.* **141**, 10 (2018) • Grape pomace extract supplementation activates FNDC5/irisin in muscle and promotes white adipose browning in rats fed a high-fat diet: C. Rodriguez Lanzi, et al.; *Food Funct.* **11**, 1537 (2020)

## Myonectin see Erythroferrone on Page 5



## Nampt / Visfatin

*Diabetes, Obesity, Sepsis, IBD, Crohn's Disease, Rheumatoid Arthritis, Preeclampsia, Various Cancers*

<b>Nampt [Visfatin/PBEF] (human) ELISA Kit</b> THE STANDARD	AG-45A-0006Y	Available Sizes: 96 wells / Twin Plex
Species reactivity: Human	Range: 0.125 to 8 ng/ml	
Sensitivity: 30 pg/ml	Sample type: Serum	
<b>Nampt [Visfatin/PBEF] (human) (IntraCellular) ELISA Kit</b>	AG-45A-0008Y	Available Size: 96 wells
Species reactivity: Human	Range: 0.25 to 16 ng/ml	
Sensitivity: 30 pg/ml	Sample type: Cell Lysate	
<b>Nampt [Visfatin/PBEF] (mouse/rat) Dual ELISA Kit</b>	AG-45A-0007Y	Available Sizes: 96 wells / Twin Plex
Species reactivity: Mouse / Rat	Range: 0.5 to 32 ng/ml	
Sensitivity: 50 pg/ml	Sample type: Serum	

## PD-1 [Programmed Cell Death Protein 1; CD279]

*Various Cancers, PD-1/PD-L1 Immunotherapy*

<b>PD-1 (human) ELISA Kit</b>	AG-45B-0015	Available Size: 96 wells
Species reactivity: Human	Range: 3.125 to 200 pg/ml	
Sensitivity: 1.6 pg/ml	Sample type: Serum, Plasma, Cell Culture Supernatant	

## PD-L1 [Programmed Cell Death 1 Ligand Protein 1; CD274]

*Various Cancers, PD-1/PD-L1 Immunotherapy*

<b>PD-L1 (human) ELISA Kit</b>	AG-45B-0016	Available Size: 96 wells
Species reactivity: Human	Range: 2.34 to 150 pg/ml	
Sensitivity: 0.8 pg/ml	Sample type: Serum, Plasma, Cell Culture Supernatant	

## Periostin

*Asthma, Allergic Inflammation, Various Cancers, Metastasis in Epithelial Tumors, Renal Injury, Osteoarthritis*

<b>Periostin (human) ELISA Kit</b>	AG-45B-0004	Available Size: 96 wells
Species reactivity: Human	Range: 78 to 5000 pg/ml	
Sensitivity: 15 pg/ml	Sample type: Serum, Plasma, Cell Culture Supernatant	
<b>Periostin (mouse) ELISA Kit</b>	AG-45B-0005	Available Size: 96 wells
Species reactivity: Mouse	Range: 31 to 2000 pg/ml	
Sensitivity: 10pg/ml	Sample type: Serum, Plasma, Cell Culture Supernatant	
<b>Periostin (human) Matched Pair Detection Set</b>	AG-46B-0005	Reagents to perform 5 x 96 wells
Species reactivity: Human	Range: 80 to 5000 pg/ml	
Sensitivity: 30 pg/ml	Sample type: Serum, Plasma, Cell Culture Supernatant	
<b>Periostin (mouse) Matched Pair Detection Set</b>	AG-46B-0002	Reagents to perform 5 x 96 wells
Species reactivity: Mouse	Range: 31 to 2000 pg/ml	
Sensitivity: 20 pg/ml	Sample type: Serum, Cell Culture Supernatant	

GLOSSARY: CVD: Cardiovascular Disease; NAFLD: Non-Alcoholic Fatty Liver Disease; SLE: Systemic Lupus Erythematosus; RA: Rheumatoid Arthritis



## Progranulin

• **Trusted Reproducible Results!** • **Used to Determine Cut-Off values for FTLD!**

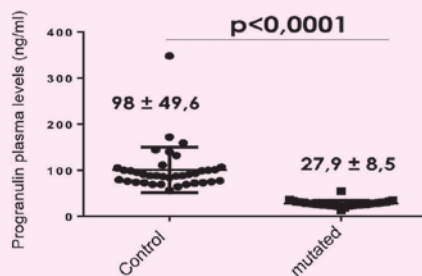
**FTLD, Rheumatoid Arthritis, Various Cancers, Type 2 Diabetes (T2D), Bipolar Disorder**

<b>Progranulin (human) ELISA Kit</b> <b>THE STANDARD</b>	AG-45A-0018Y	Available Sizes: 96 wells / Twin Plex
Species reactivity: Human	Range: 0.063 to 4 ng/ml	
Sensitivity: 32 pg/ml	Sample type: Serum, Plasma, Urine, Cell Culture Supernatant, CSF	
<b>Progranulin (mouse) ELISA Kit</b> <b>THE STANDARD</b>	AG-45A-0019Y	Available Sizes: 96 wells / Twin Plex
Species reactivity: Mouse	Range: 0.125 to 8 ng/ml	
Sensitivity: 60 pg/ml	Sample type: Serum, Cell Culture Supernatant	
<b>Progranulin (rat) ELISA Kit</b> <b>THE STANDARD</b>	AG-45A-0043Y	Available Sizes: 96 wells / Twin Plex
Species reactivity: Rat	Range: 0.063 to 4 ng/ml	
Sensitivity: 40 pg/ml	Sample type: Serum, Cell Culture Supernatant	
<b>NEW Progranulin (human) ELISA Kit (mAb/mAb)</b>	AG-45B-0027	Available Size: 96 wells
Species reactivity: Human	Range: 0.063 to 4 ng/ml	
Sensitivity: 60 pg/ml	Sample type: Serum, Cell Culture Supernatant	

The new mAb/mAb based human Progranulin ELISA Kit has been thoroughly validated and compared to the standard pAb/pAb based ELISA Kit (Prod. No. AG-45A-0018Y). With this new ELISA Kit, levels below 50 ng/ml are strongly suggestive of GRN mutations. In a validation on 191 patient samples, confirmed by a molecular gene analysis, the new kit provided a sensitivity and specificity of 100% for detecting FTLD mutations.

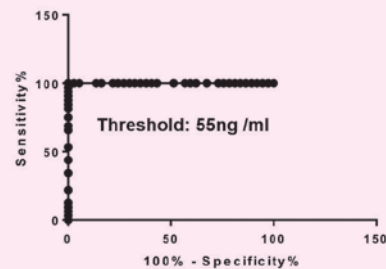
### Concentrations of Progranulin plasma levels in FTLD and healthy samples:

Using the new mAb-based ELISA kit (AG-45B-0027), plasma progranulin levels in FTLD-GRN are lower (~28 ng/ml) compared to controls (~98 ng/ml).



### ROC curve of the new ELISA Kit:

ROC analysis shows that at a threshold of 55 ng/ml plasma progranulin measured with ELISA Kit (AG-45B-0027) discriminates FTLD-GRN patients from controls with 100% sensitivity and 100% specificity.



## RBP4

**Insulin Resistance, Microalbuminuria, Type 2 Diabetes (T2D), CVD, Obesity, NAFLD, PCOS, Ovarian Cancer**

<b>RBP4 (human) ELISA Kit (Quantitative)</b> <b>THE STANDARD</b>	AG-45A-0035Y	Available Sizes: 96 wells / Twin Plex
Species reactivity: Human	Range: 0.39 to 25 ng/ml	
Sensitivity: 380 pg/ml	Sample type: Serum, Plasma, Urine, Cell Culture Supernatant	
<b>RBP4 (human) Competitive ELISA Kit</b>	AG-45A-0010Y	Available Sizes: 96 wells / Twin Plex
Species reactivity: Human	Range: 0.001 to 5 µg/ml	
Sensitivity: 1 ng/ml	Sample type: Serum, Plasma, Urine, Cell Culture Supernatant	
<b>RBP4 (mouse/rat) Dual ELISA Kit</b>	AG-45A-0012Y	Available Sizes: 96 wells / Twin Plex
Species reactivity: Mouse / Rat	Range: 0.188 to 12 ng/ml	
Sensitivity: 60 pg/ml	Sample type: Serum, Urine, Cell Culture Supernatant	

# Validated SARS-CoV-2 Research Assays



## QUALITATIVE IgG DETECTION

### SARS-CoV-2 (Spike RBD) IgG Serological ELISA Kit

AG-45B-0020 96 wells

This is a sensitive and specific ELISA Kit that can be used for the qualitative measurement of human Immunoglobulin G (IgG) against SARS-CoV-2 Spike (Receptor Binding Domain) protein in serum and plasma samples.

#### False Positive Control Plate:

Included in this assay kit and unique to the market for SARS-CoV-2 IgG assays, is a second plate (antigen non-coated Background Plate or False Positive Control Plate) to determine the sample specific background and to measure the amount of IgG antibodies non-specifically bound to the well. To measure presence of anti-SARS-CoV-2 human IgG antibodies in serum or plasma, net sample optical densities (Net ODs) are calculated by subtracting each sample Background Plate OD from the Spike (SARS-CoV-2) Antigen Plate (Spike Plate) OD.

#### Dry Blood Samples:

The Assay Kit can also be used with Dry Blood Samples, which is an inexpensive and easy alternative collecting blood!

## DISCOVERY OF INHIBITORS

### SARS-CoV-2 Inhibitor Screening Kit

AG-48B-0001 96 wells

This is a High Throughput Screening (HTS) detection assay for the determination of SARS-CoV-2 blocking compounds.

## VALIDATE SARS-CoV-2 IMMUNE RESPONSE

### SARS-CoV-2 Neutralizing Antibodies Detection Kit

AG-48B-0002 96 wells

This Assay Kit that can be used to detect the presence of neutralizing antibodies against SARS-CoV-2 in serum/plasma in about 2 hours independently of species and isotypes! It is an easy, safe, fast and scalable alternative to the classical neutralization assays using Vero E6 cells, such as virus neutralization test (VNT) and pseudo-virus neutralization test (pVNT) and does **not** need to follow biosafety requirements.

#### Useful Tool for SARS-CoV-2 Vaccine and Therapeutic Development:

The kit is useful in current COVID-19 investigations of seroprevalence, assessment of immune response, herd immunity, longevity of protective immunity, efficacy of different vaccine candidates as well as tracking infections in animals.

#### To Confirm & Characterize further SARS-CoV-2 Serological Assay Results:

This Neutralizing Antibody Detection Kit is ideal to further characterize the positive anti-SARS-CoV-2 IgG antibodies, detected with the SARS-CoV-2 IgG (Spike RBD) Serological ELISA Kit (Prod. No. AG-45B-0020).

## QUANTITATIVE SOLUBLE ACE2 DETECTION

### ACE2 (human) ELISA Kit

AG-45B-0023 96 wells

This is a sensitive and specific colorimetric sandwich ELISA Kit that can be used for the *in vitro* quantitative determination of soluble human ACE2 in cell culture supernatants, serum, plasma and urine.

#### Also Available:

## SARS-CoV-2 Variants Neutralizing Antibody Detection Kits

- B.1.1.7 Variant, Alpha
- B.1.351 Variant, Beta
- P.1 Variant, Gamma
- B.1.617.1 Variant, Kappa
- B.1.617.2 Variant, Delta

## RELM- $\beta$

**Potential Gut-Inflammation, Inflammatory Bowel Disease, Crohn's Disease, Ulcerative Colitis**

### RELM- $\beta$ (human) *Matched Pair Detection Set*

AG-46A-0001

Reagents to perform 5 x 96 wells

Species reactivity: Human  
Sensitivity: 10 pg/ml

Range: 0.016 to 1 ng/ml  
Sample type: Human Feces

## Resistin

**Insulin Resistance, Type 2 Diabetes (T2D), Obesity, NAFLD, Various Inflammatory Diseases**

### Resistin (human) ELISA Kit

AG-45A-0023Y

Available Size: 96 wells

Species reactivity: Human  
Sensitivity: 100 pg/ml

Range: 0.125 to 8 ng/ml  
Sample type: Serum, Plasma, Cell Culture Supernatant

## Sirtuin 1

*Inquire – Bulk Orders only*

**Metabolic Syndrome, Type 2 Diabetes, Alzheimer's Disease, Various Cancers, Inflammatory Diseases**

### Sirtuin 1 (human) (IntraCellular) ELISA Kit

AG-45A-0029Y

Species reactivity: Human  
Sensitivity: 30 pg/ml

Range: 0.032 to 2 ng/ml  
Sample type: Cell Lysate

## Vaspin

**Type 2 Diabetes (T2D), Obesity, Insulin Resistance, CVD, NAFLD, Inflammatory Diseases**

### Vaspin (human) ELISA Kit **THE STANDARD**

AG-45A-0017Y

Available Sizes: 96 wells / Twin Plex

Species reactivity: Human  
Sensitivity: 12 pg/ml

Range: 0.016 to 1 ng/ml  
Sample type: Serum, Plasma, Cell Culture Supernatant

## Visfatin *see Nampt on Page 8*

## Zinc- $\alpha$ -2-glycoprotein (ZAG)

**Obesity, Various Cancers, Diabetic Nephropathy, Preeclampsia**

### ZAG (human) TurboELISA Kit

AG-48B-1000

Available Size: 96 wells

Species reactivity: Human  
Sensitivity: 0.23 ng/ml

Range: 0.9375 to 60 ng/ml  
Sample type: Serum, Plasma, Cell Culture Supernatant

### ZAG (human) *Matched Pair Detection Set*

AG-46B-0008

Reagents to perform 5 x 96 wells

Species reactivity: Human  
Sensitivity: 100 pg/ml

Range: 0.0156 to 1 ng/ml  
Sample type: Serum, Plasma, Cell Culture Supernatant



# JaICA

## Unique High Quality ImmunoAssays

### Oxidative Stress Marker Assays

PRODUCT NAME	PID	DETECTION RANGE	SAMPLES TYPES	SIZE
<b>Dityrosine [DT] ELISA Kit</b>	JAI-KDT-010E	0.05 – 12 µmol/L	UR	1x 96 wells
<b>8-OHdG Check ELISA Kit</b>	JAI-KOG-200SE	0.5 – 200 ng/mL	UR	1x 96 wells
<b>8-OHdG Check ELISA Kit (High Sensitivity)</b>	JAI-KOG-HS10E	0.125 – 10 ng/mL	PL, SE, UR	1x 96 wells
<b>Hexanoyl-Lys [HEL] ELISA Kit</b>	JAI-KHL-700E	2 – 700 nmol/L	SE, UR	1x 96 wells
<b>Total Antioxidant Capacity (PAO) Test Kit</b>	JAI-KPA-050	21.9 – 4378 µmol/L (cupric ion reducing power)	PL, SE	1x 96 wells

### Trace Element Colorimetric Assays

PRODUCT NAME	PID	DETECTION RANGE	SAMPLES TYPES	SIZE
<b>Iron Assay Kit (Ferrozine Method)</b>	JAI-CFE-005	5 – 1000 µg/dL	CL, PL, SA, SE, TS, UR	100 tests
<b>Iron Assay Kit (Nitroso-PSAP Method)</b>	JAI-CFE-010	10 – 1000 µg/dL	CL, PL, SA, SE, TS, UR	100 tests
<b>UIBC Assay Kit (Bathophenanthroline Method)</b>	JAI-CBC-800	10 – 800 µg/dL	PL, SE	100 tests
<b>Copper Assay Kit (3,5-DiBr-PAESA Method)</b>	JAI-CCU-400	3 – 400 µg/dL	CL, PL, SA, SE, TS, UR	100 tests
<b>Zinc Assay Kit (5-Br-PAPS Method)</b>	JAI-CZN-001	4 – 1000 µg/dL	CL, PL, SA, SE, TS, UR	100 tests
<b>Calcium Assay Kit (Chlorophosphonazo-III Method)</b>	JAI-CCA-020	0.2 – 20 mg/dL	CL, PL, SA, SE, TS, UR	200 tests
<b>Calcium Assay Kit (O-Cresolphthalein Method)</b>	JAI-CCA-030	0.2 – 30 mg/dL	CL, PL, SA, SE, TS, UR	200 tests
<b>Magnesium Assay Kit (Xylidyl Blue-I Method)</b>	JAI-CMG-035	0.2 – 3.5 mg/dL	CL, PL, SA, SE, TS, UR	100 tests

**Sample Types:** CL=Cell Lysate; PL=Plasma; SA=Saliva; SE=Serum; TS=Tissue Supernatant; UR=Urine

## Latest Additions

*Developed & Manufactured by AdipoGen Life Sciences*

**AdipoGen**<sup>®</sup>  
LIFE SCIENCES

MANUFACTURED IN SWITZERLAND

**NEW**

- **Progranulin (human) ELISA Kit (mAb/mAb)**  
*see Page 9*
- **FNDC4 (human) ELISA Kit**  
*see Page 5*



曜鴻生物科技股份有限公司  
Yao-Hong Biotechnology Inc.



02-2668 6845



yaohong@yh-bio.com.tw

