

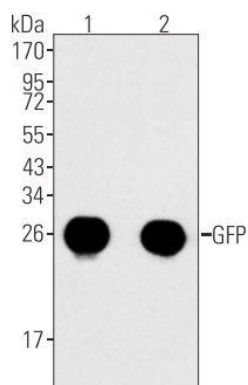


Product no **YH-80015S**
GFP-Tag (7G9) Mouse mAb

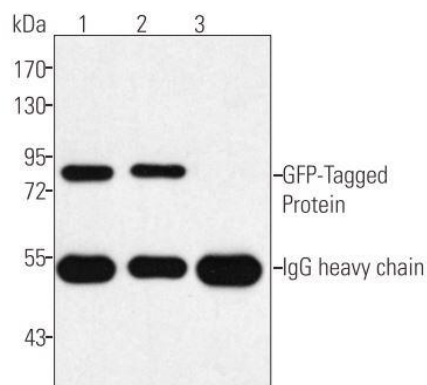
Product information

Target description	The green fluorescent protein (GFP) was originally identified as a protein involved in the bioluminescence of the jellyfish <i>Aequorea victoria</i> . GFP cDNA produces a fluorescent product when expressed in prokaryotic cells, without the need for exogenous substrates or cofactors, making GFP a useful tool for monitoring gene expression and protein localization in vivo. Several GFP mutants have been developed, including EGFP, which fluoresce more intensely than the wildtype GFP and have shifted excitation maxima, making them useful for FACS and fluorescence microscopy as well as double-labeling applications. GFP is widely used in expression vectors as a fusion protein tag, allowing expression and monitoring of heterologous proteins fused to GFP.	
Antigen	This YH monoclonal antibody is produced by immunizing animals with full-length recombinant GFP. His-Tag (2A8) Mouse mAb detects over-expressed or recombinant proteins containing the 6x His epitope tag.	
Application	Western blotting	1:5000
	Immunofluorescence	1:500
	Immunoprecipitation	1:50
	ELISA	1:2000
	<i>*For Western blots, incubate membrane with diluted antibody in 5% w/v nonfat dry milk, 1x TBS, 0.05% Tween-20 at 4°C with gentle shaking, overnight.</i>	
Reactivity	All	
Storage	Store at -20°C. Stable for one year from the date of shipment.	
Package	20µl/per tube	
References	<ol style="list-style-type: none">1. Prasher, D.C., et al. 1992. Primary structure of the <i>Aequorea victoria</i> green fluorescent protein. <i>Gene</i> 111: 229-233.2. Chalfie, M., et al. 1994. Green fluorescent protein as a marker for gene expression. <i>Science</i> 263: 802-805.	
Isotype	Mouse IgG1	

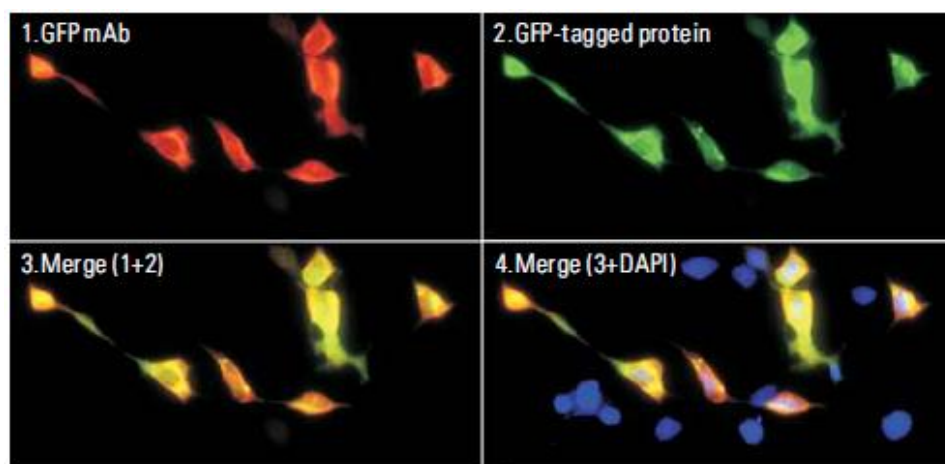




Western blot analysis of over-expressed GFP-tagged protein in 293T cell lysate, using YH GFP-tag (7G9) Mouse mAb. 1) The antibody dilutions are 1:5000 (lane 1) and 1:10000 (lane 2). Each lane was loaded with 10 μ g of cell lysate.



IP of extracts from 293T cells transfected (lane 1,2) with a GFP-tagged protein and a mock transfection (lane 3, using the same protein without the GFP tag), using YH GFP-Tag (7G9) Mouse mAb and probed on Western blot using the same antibody. Dilution: 1:50 (1), 1:100 (2), 1:50 (3).



IF analysis of 293T cells transfected with a GFP-tagged protein, using YH GFP-Tag (7G9) Mouse mAb at a 1:500 dilution.

